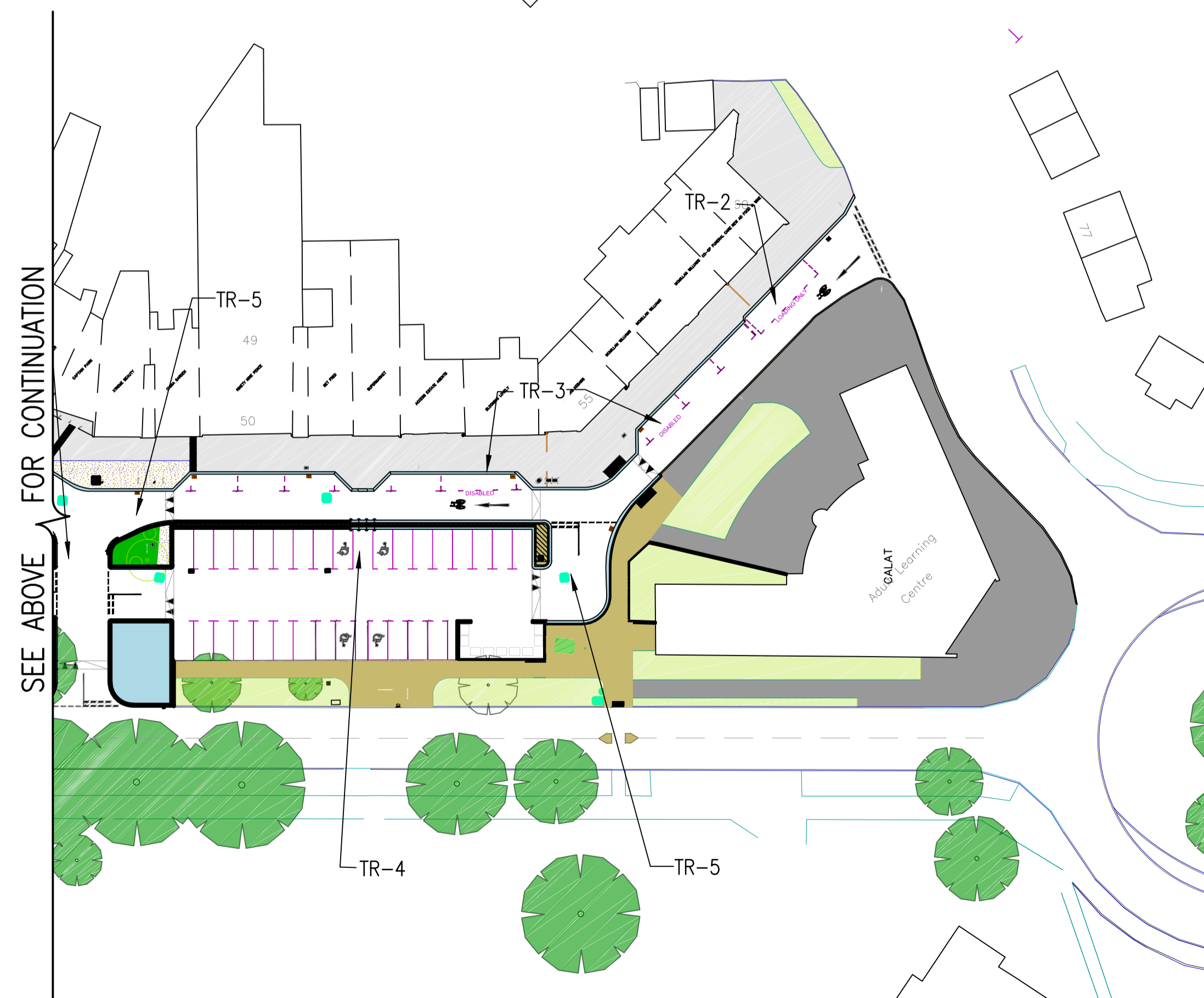




FOR CONTINUATION
SEE UNDER

CODE	PROPOSED
TR-2	LOADING ONLY BAY TO DIAGRAM 1028.3 WITH MAXIMUM 30MIN. STAY BETWEEN 08:00-18:30, MONDAY TO SATURDAY INCLUSIVE.
TR-3	DISABLED BAY TO DIAGRAM 1028.3 WITH MAXIMUM 30MIN. STAY BETWEEN 08:00-18:30, MONDAY TO SATURDAY INCLUSIVE.
TR-4	NEW PARKING BAYS.
TR-5	NEW RAISED TABLE REQUIRING A NOTICE UNDER SECTION 9C OF THE HIGHWAYS ACT 1980-OBJECTIONS ARE NOT CONSIDERED.



FOR CONTINUATION
SEE ABOVE

- NOTES
1. THIS DRAWING IS TO BE READ IN CONJUNCTION WITH ALL RELEVANT ARCHITECT'S AND ENGINEER'S DRAWINGS AND THE SPECIFICATION.
 2. ANY EXISTING SIGNAL AND ROAD MARKINGS NOT HIGHLIGHTED CAN BE ASSUMED TO BE REMOVED.

FOR INFORMATION ONLY

A	04.02.15	ISSUED FOR INFORMATION...	AO
-	20.08.14	ISSUED FOR INFORMATION...	AO

job
**CENTRAL PARADE
NEW ADDINGTON
CROYDON**

title
TMO SUMMARY
PROPOSED LAYOUT

drawn SMe	checked AO
date JAN 15	scale (original - A1) 1:500

Alan Baxter

75 Cowcross Street London EC1M 6EL
tel 020 7250 1555
email aba@alanbaxter.co.uk
www.alanbaxter.co.uk

dig. no. 1599/40/116	rev. A
--------------------------------	------------------